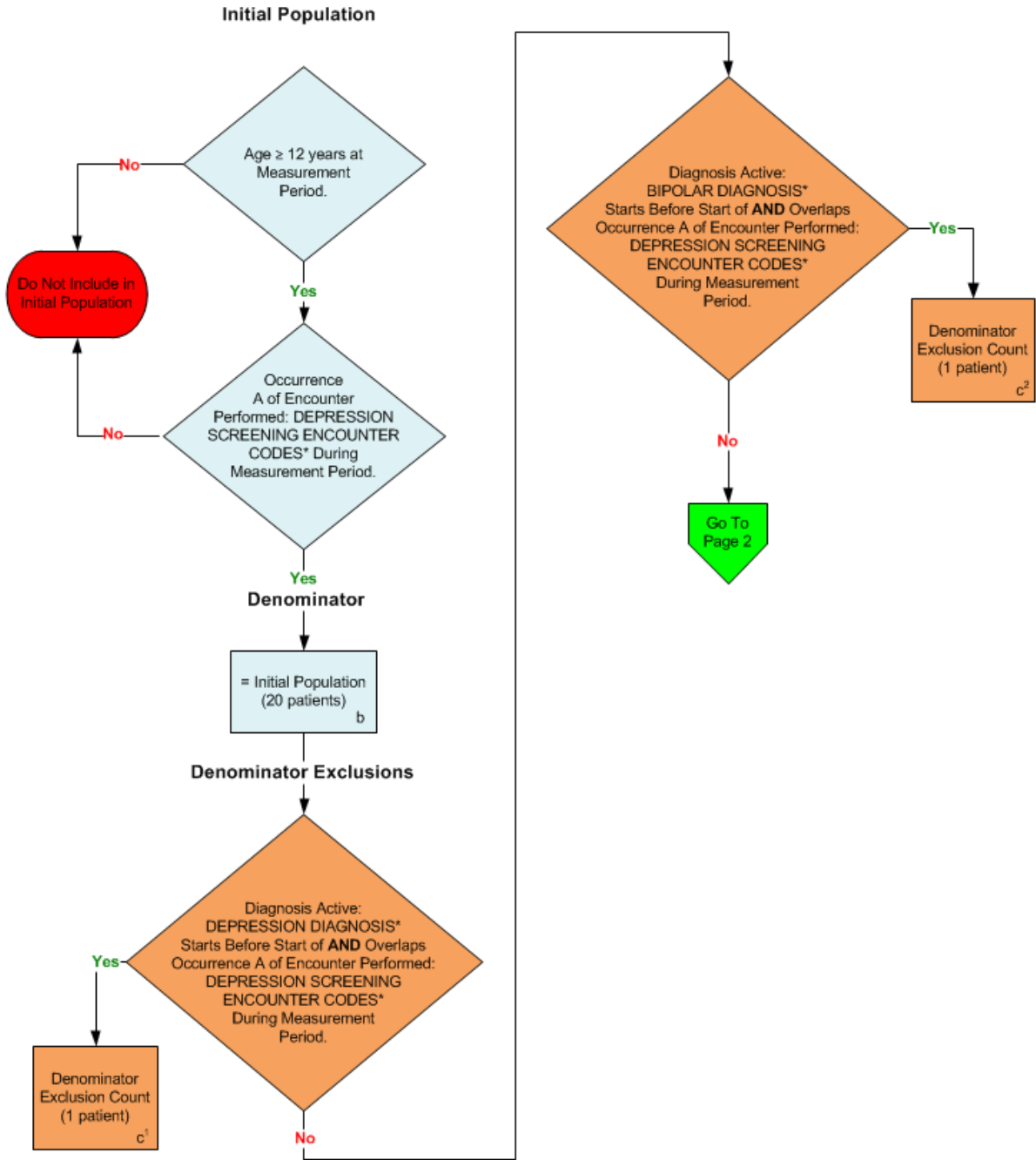


**2014 eCQM Flow
Measure Identifier: CMS2v5**

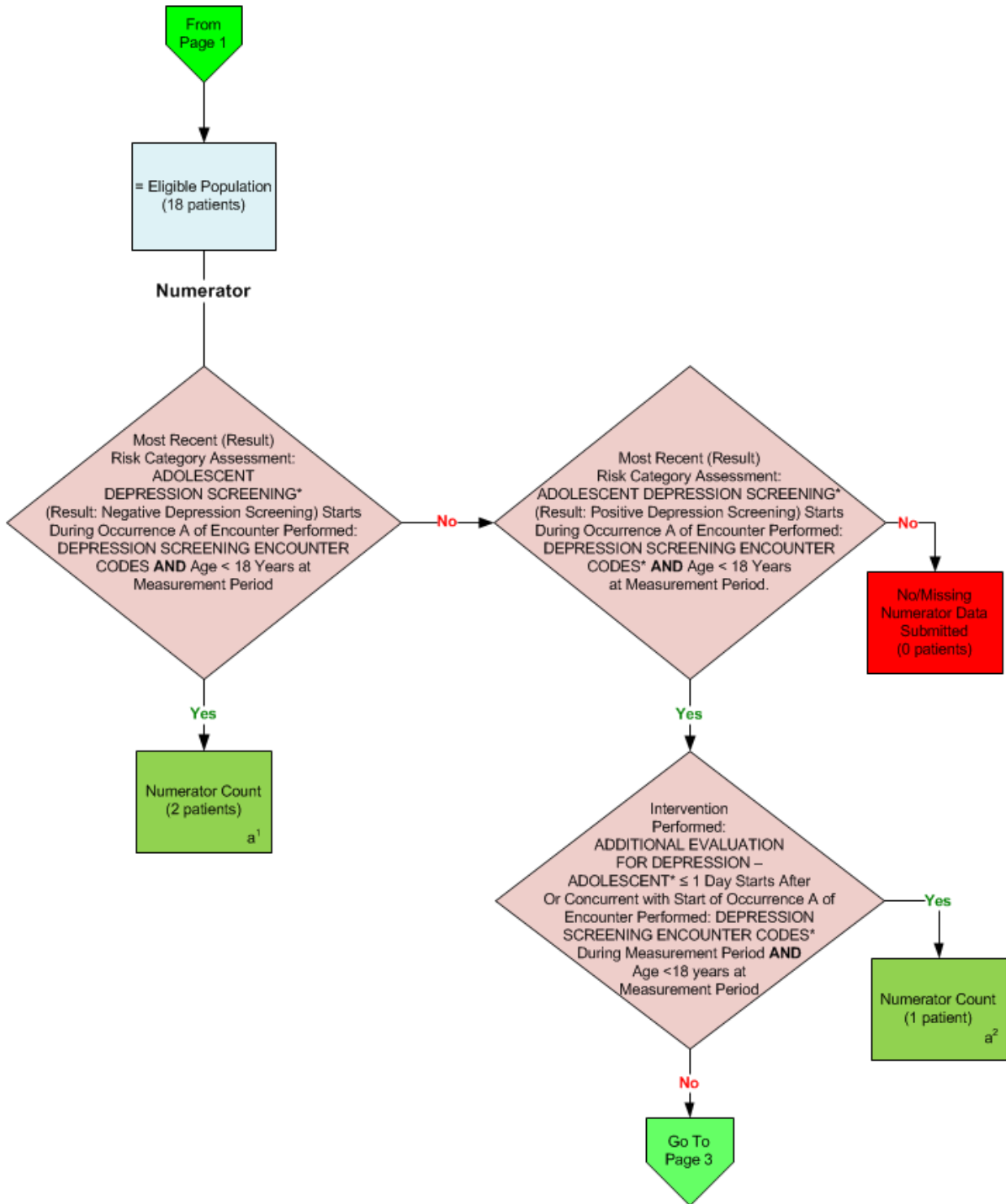
NQF 0418: Preventive Care and Screening: Screening for Clinical Depression and Follow-Up Plan



*Please refer to the specific section of the eCQM to identify the QDM data elements and associated value sets for use in reporting this eCQM.

**2014 eCQM Flow
Measure Identifier: CMS2v5**

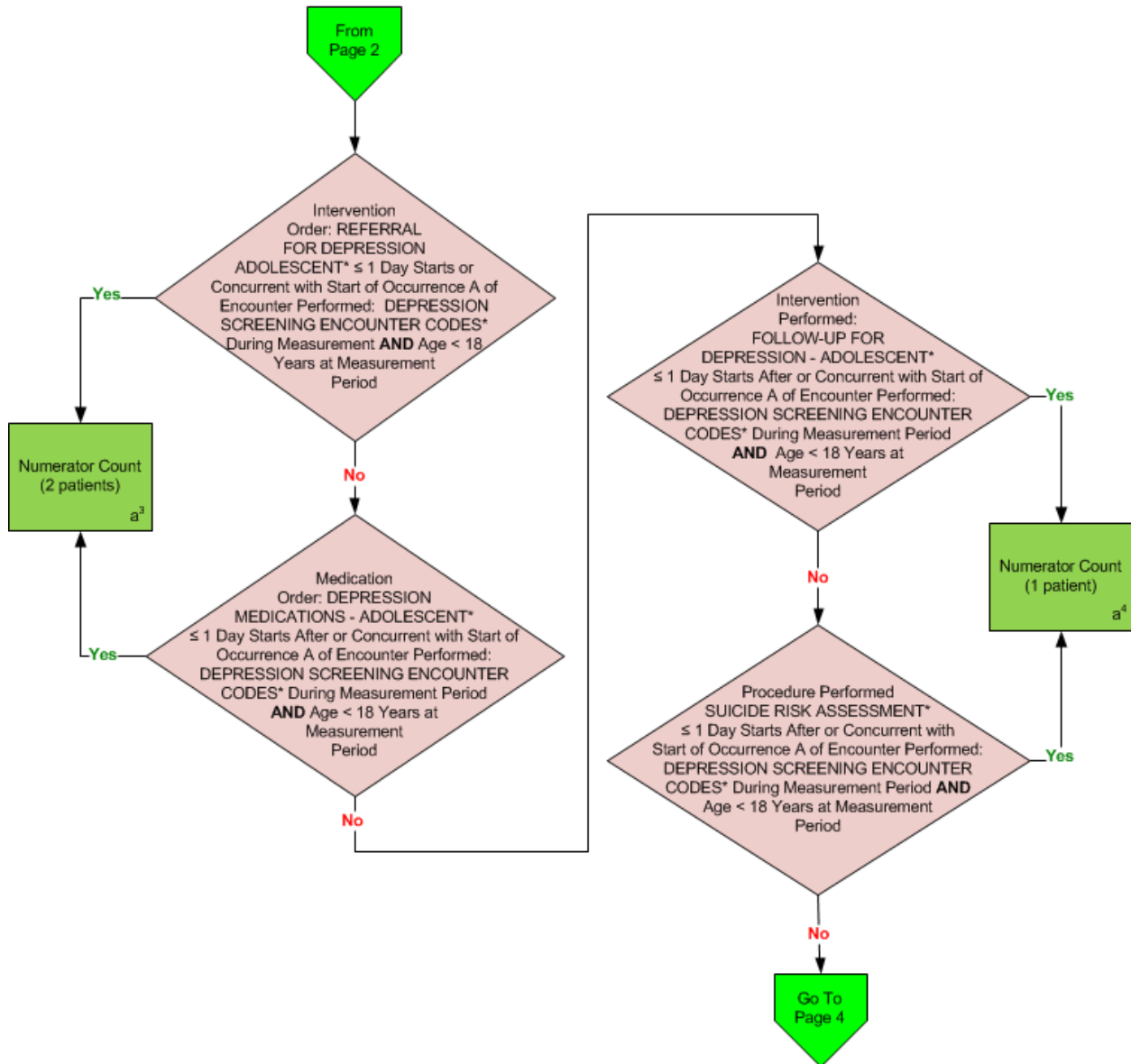
NQF 0418: Preventive Care and Screening: Screening for Clinical Depression and Follow-Up Plan



*Please refer to the specific section of the eCQM to identify the QDM data elements and associated value sets for use in reporting this eCQM.

**2014 eCQM Flow
Measure Identifier: CMS2v5**

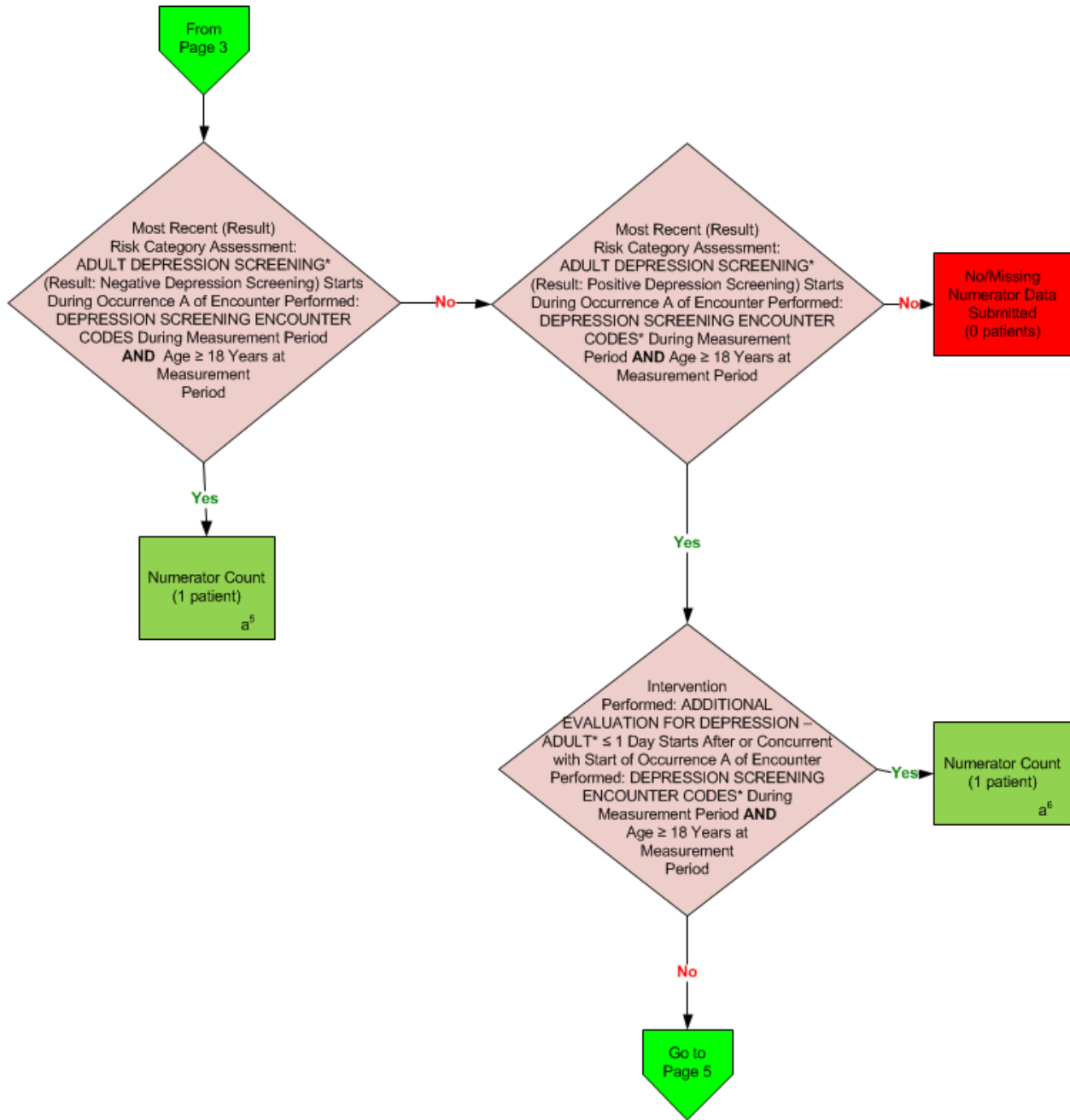
NQF 0418: Preventive Care and Screening: Screening for Clinical Depression and Follow-Up Plan



*Please refer to the specific section of the eCQM to identify the QDM data elements and associated value sets for use in reporting this eCQM.

2014 eCQM Flow
Measure Identifier: CMS2v5

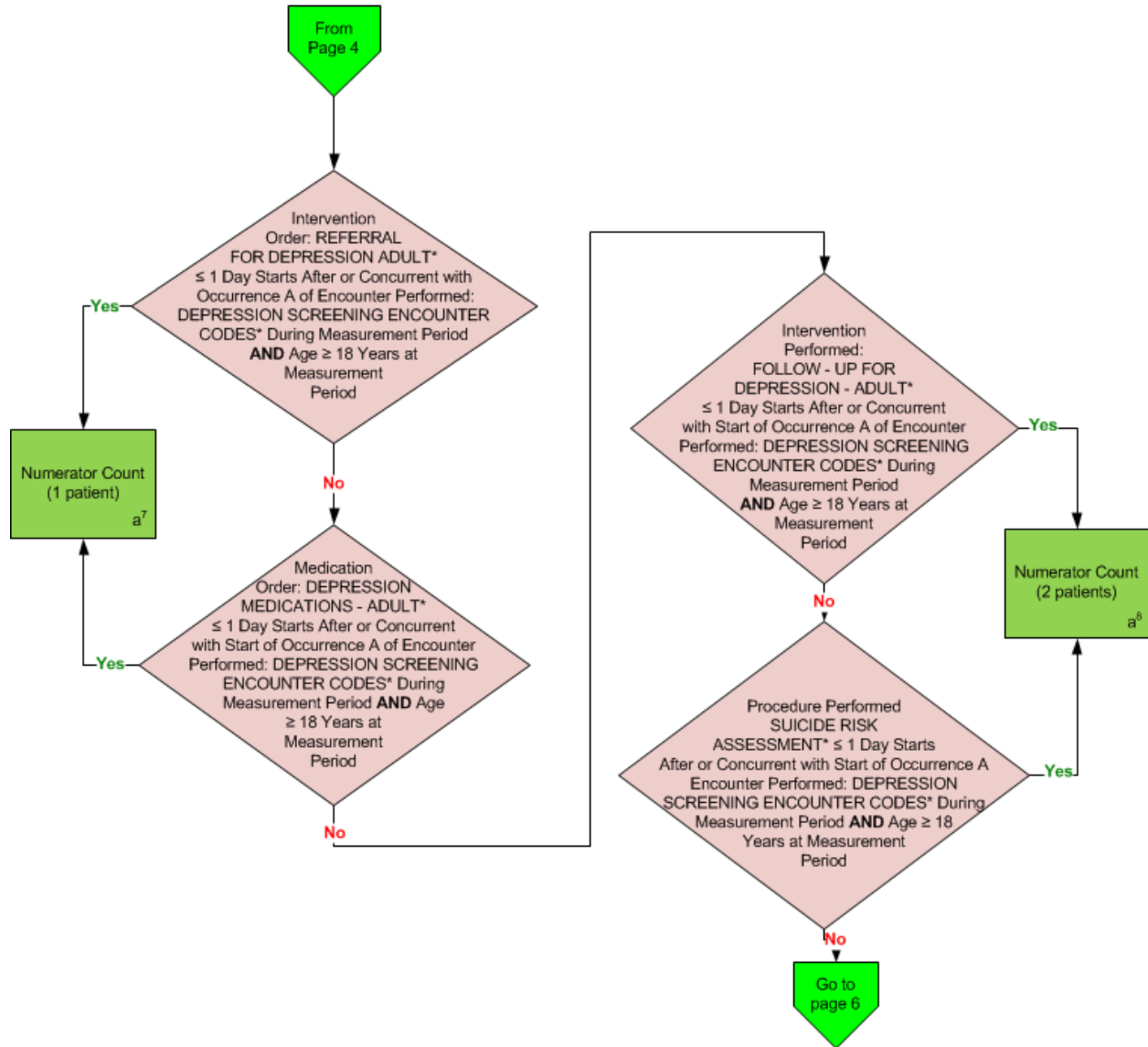
NQF 0418: Preventive Care and Screening: Screening for Clinical Depression and Follow-Up Plan



*Please refer to the specific section of the eCQM to identify the QDM data elements and associated value sets for use in reporting this eCQM.

**2014 eCQM Flow
Measure Identifier: CMS2v5**

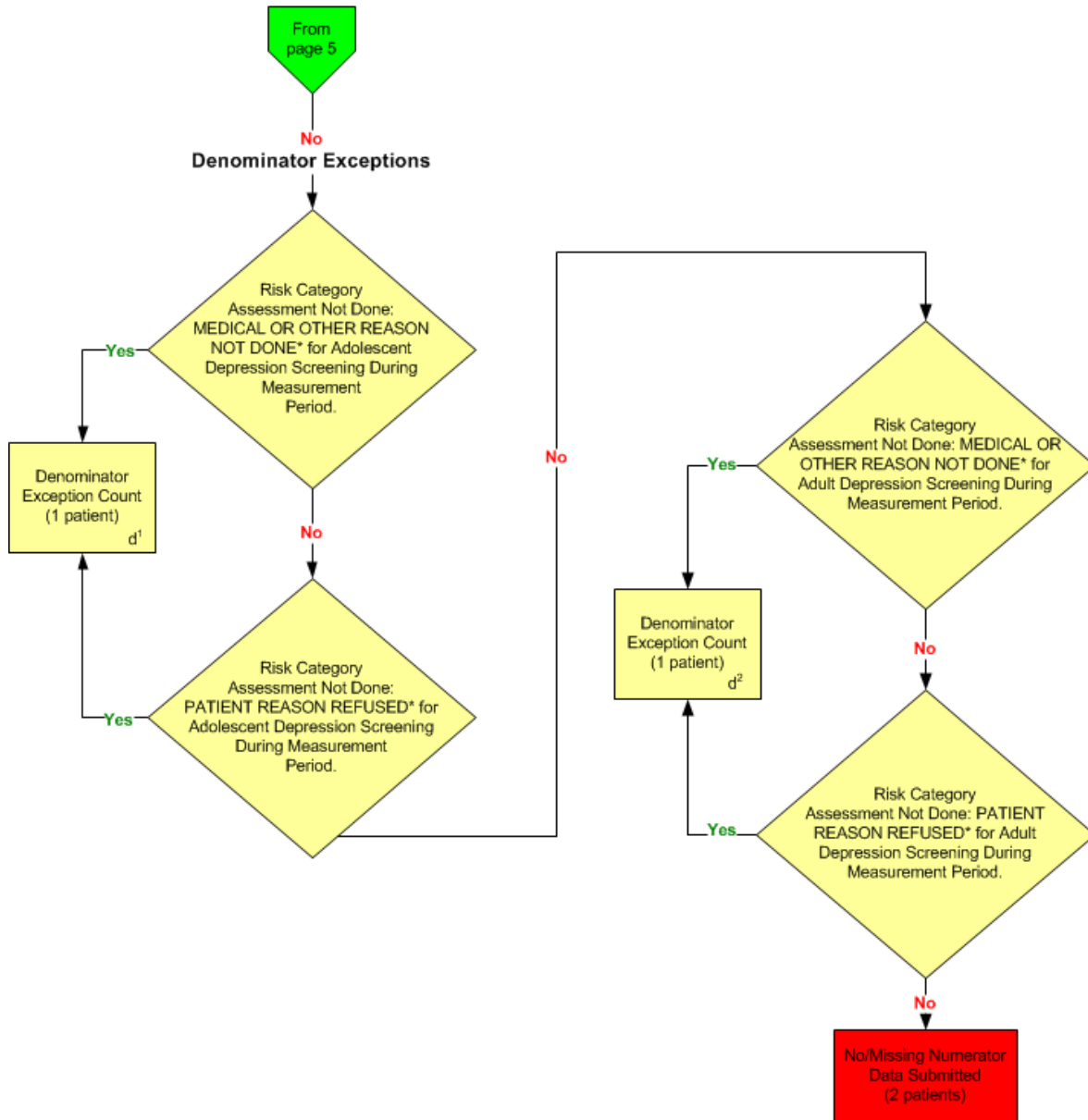
NQF 0418: Preventive Care and Screening: Screening for Clinical Depression and Follow-Up Plan



*Please refer to the specific section of the eCQM to identify the QDM data elements and associated value sets for use in reporting this eCQM.

**2014 eCQM Flow
Measure Identifier: CMS2v5**

NQF 0418: Preventive Care and Screening: Screening for Clinical Depression and Follow-Up Plan



SAMPLE CALCULATION:

Performance Rate =
 Numerator (a¹+a²+a³+a⁴+a⁵+a⁶+a⁷+a⁸ = 11 patients)
 Denominator (b=20 patients) – Denominator Exclusions (c¹+c²+c³+c⁴ = 2 patients) – Denominator Exceptions (d¹+d² = 2 patients) = **68.75%**

*Please refer to the specific section of the eCQM to identify the QDM data elements and associated value sets for use in reporting this eCQM.

2014 eCQM Flows

Measure Identifier: CMS2v5

NQF 0418: Preventive Care and Screening: Screening for Clinical Depression and Follow-Up Plan

Please refer to the specific section of the eCQM to identify the Population Criteria and associated value sets for use in reporting this eCQM.

1. Start Initial Population
2. Check Age:
 - a. If the AGE is greater than or equal to 12 years at measurement period equals No, do not include in Initial Population. Stop Processing.
 - b. If the AGE is greater than or equal to 12 years at measurement period equals Yes, proceed to check Occurrence A of Encounter Performed.
3. Check Occurrence A of Encounter Performed:
 - a. If Occurrence A of Encounter Performed QDM data element, DEPRESSION SCREENING ENCOUNTER CODES, during measurement period equals Yes, include in the Initial Population and go to Denominator.
 - b. If Occurrence A of Encounter Performed QDM data element, DEPRESSION SCREENING ENCOUNTER CODES, during measurement period equals No, do not include in the Initial Population. Stop Processing.
4. Start Denominator
 - a. Denominator equals the Initial Population. Denominator is represented by Letter b in the sample calculation listed at the end of this document. Letter b equals 20 patients in the sample calculation.
5. Start Denominator Exclusions
6. Check Diagnosis Active:
 - a. If the Diagnosis Active QDM data element, DEPRESSION DIAGNOSIS, starts before start of AND overlaps Occurrence A of Encounter Performed QDM data element, DEPRESSION SCREENING ENCOUNTER CODES, during measurement period equals Yes, include in Denominator Exclusions Count. Denominator Exclusion is represented by Letter c¹ in the sample calculation listed at the end of this document. Letter c¹ equals 1 patient in the sample calculation.
 - b. If the Diagnosis Active QDM data element, DEPRESSION DIAGNOSIS, starts before start of AND overlaps Occurrence A of Encounter Performed QDM data element, DEPRESSION SCREENING ENCOUNTER CODES, during measurement period equals No, continue on to next Diagnosis Active.
7. Check Diagnosis Active:
 - a. If the Diagnosis Active QDM data element, BIPOLAR DIAGNOSIS, starts before start of AND overlaps Occurrence A of Encounter Performed QDM data element, DEPRESSION SCREENING ENCOUNTER CODES, during measurement period

- equals Yes, include in Denominator Exclusions count. Denominator Exclusion is represented by Letter c^2 in the sample calculation listed at the end of this document. Letter c^2 equals 1 patient in the sample calculation..
- b. If the Diagnosis Active QDM data element, BIPOLAR DIAGNOSIS, starts before start of AND overlaps Occurrence A of Encounter Performed QDM data element, DEPRESSION SCREENING ENCOUNTER CODES, during measurement period equals No, continue on to Numerator.
8. Start Numerator
 9. Check Most Recent (Result) Risk Category Assessment:
 - a. If Most Recent (Result) Risk Category Assessment QDM data element, ADOLESCENT DEPRESSION SCREENING (result: Negative Depression Screening), starts during Occurrence A of Encounter Performed, QDM data element, DEPRESSION SCREENING ENCOUNTER CODES AND Age less than 18 years at measurement period equals Yes, include in Numerator Count. Numerator is represented by Letter a^1 in the sample calculation listed at the end of this document. Letter a^1 equals 2 patients in the sample calculation.
 - b. If Most Recent (Result) Risk Category Assessment QDM data element, ADOLESCENT DEPRESSION SCREENING (result: Negative Depression Screening), starts during Occurrence A of Encounter Performed, QDM data element, DEPRESSION SCREENING ENCOUNTER CODES AND Age less than 18 years at measurement period equals No, proceed to check Risk Category Assessment.
 10. Check Most Recent (Result) Risk Category Assessment:
 - a. If Most Recent (Result) Risk Category Assessment QDM data element, ADOLESCENT DEPRESSION SCREENING (result: Positive Depression Screening), starts during Occurrence A of Encounter Performed, QDM data element, DEPRESSION SCREENING ENCOUNTER CODES AND Age less than 18 years at measurement period equals Yes, proceed to check Intervention Performed.
 - b. If Most Recent (Result) Risk Category Assessment QDM data element, ADOLESCENT DEPRESSION SCREENING (result: Positive Depression Screening), starts during Occurrence A of Encounter Performed, QDM data element, DEPRESSION SCREENING ENCOUNTER CODES AND Age less than 18 years at measurement period equals No, include in the No/Missing Data Submitted Count. Stop Processing.
 11. Check Intervention Performed:
 - a. If the Intervention Performed QDM data element, ADDITIONAL EVALUATION FOR DEPRESSION - ADOLESCENT, less than or equal to 1 day starts after or concurrent with start of Occurrence A Encounter Performed, QDM data element, DEPRESSION SCREENING ENCOUNTER CODES, during measurement period AND Age less than 18 years at measurement period equals Yes, include in Numerator Count. Numerator is represented by Letter a^2 in the sample calculation listed at the end of this document. Letter a^2 equals 1 patient in the sample calculation.

- b. If the Intervention Performed QDM data element, ADDITIONAL EVALUATION FOR DEPRESSION - ADOLESCENT, less than or equal to 1 day starts after or concurrent with start of Occurrence A Encounter Performed, QDM data element, DEPRESSION SCREENING ENCOUNTER CODES, during measurement period AND Age less than 18 years at measurement period equals No, proceed to check Intervention Order.

12. Check Intervention Order:

- a. If the Intervention Order QDM data element, REFERRAL FOR DEPRESSION ADOLESCENT, less than or equal to 1 day starts after or concurrent with start of Occurrence A of Encounter Performed, QDM data element, DEPRESSION SCREENING ENCOUNTER CODES during measurement period AND Age less than 18 years at measurement period equals Yes, include in Numerator Count. Numerator is represented by Letter a³ in the sample calculation listed at the end of this document. Letter a³ equals 2 patients in the sample calculation.
- b. If the Intervention Order QDM data element, REFERRAL FOR DEPRESSION ADOLESCENT, less than or equal to 1 day starts after or concurrent with start of Occurrence A of Encounter Performed, QDM data element, DEPRESSION SCREENING ENCOUNTER CODES during measurement period AND Age less than 18 years at measurement period equals No, proceed to check Medication Order.

13. Check Medication Order:

- a. If the Medication Order QDM data element, DEPRESSION MEDICATIONS – ADOLESCENT, less than or equal to 1 day starts after or concurrent with start of Occurrence A of Encounter Performed, QDM data element, DEPRESSION SCREENING ENCOUNTER CODES during measurement period AND Age less than 18 years at measurement period equals Yes, include in Numerator Count. Numerator is represented by Letter a³ in the sample calculation listed at the end of this document. Letter a³ equals 2 patients in the sample calculation.
- b. If the Medication Order QDM data element, DEPRESSION MEDICATIONS – ADOLESCENT, less than or equal to 1 day starts after or concurrent with start of Occurrence A of Encounter Performed, QDM data element, DEPRESSION SCREENING ENCOUNTER CODES during measurement period AND Age less than 18 years at measurement period equals No, proceed to check Intervention Performed.

14. Check Intervention Performed:

- a. If the Intervention Performed QDM data element, FOLLOW-UP FOR DEPRESSION – ADOLESCENT, less than or equal to 1 day starts after or concurrent with start of Occurrence A of Encounter Performed, QDM data element, DEPRESSION SCREENING ENCOUNTER CODES during measurement period AND Age less than 18 years at measurement period equals Yes, include in Numerator Count. Numerator is represented by Letter a⁴ in the sample calculation listed at the end of this document. Letter a⁴ equals 1 patient in the sample calculation.
- b. If the Intervention Performed QDM data element, FOLLOW-UP FOR DEPRESSION – ADOLESCENT, less than or equal to 1 day starts after or concurrent with start of

Occurrence A of Encounter Performed, QDM data element, DEPRESSION SCREENING ENCOUNTER CODES during measurement period AND Age less than 18 years at measurement period equals No, proceed to check Procedure Performed.

15. Check Procedure Performed:

- a. If the Procedure Performed QDM data element, SUICIDE RISK ASSESSMENT, less than or equal to 1 day starts after or concurrent with start of Occurrence A of Encounter Performed, QDM data element, DEPRESSION SCREENING ENCOUNTER CODES during measurement period AND Age less than 18 years at measurement period equals Yes, include in Numerator Count. Numerator is represented by Letter a⁴ in the sample calculation listed at the end of this document. Letter a⁴ equals 1 patient in the sample calculation.
- b. If the Procedure Performed QDM data element, SUICIDE RISK ASSESSMENT, less than or equal to 1 day starts after or concurrent with start of Occurrence A of Encounter Performed, QDM data element, DEPRESSION SCREENING ENCOUNTER CODES during measurement period AND Age less than 18 years at measurement period equals No, proceed to check Most Recent (Result) Risk Category Assessment.

16. Check Most Recent (Result) Risk Category Assessment:

- a. If Most Recent (Result) Risk Category Assessment QDM data element, ADULT DEPRESSION SCREENING (result: Negative Depression Screening), starts during Occurrence A of Encounter Performed, QDM data element, DEPRESSION SCREENING ENCOUNTER CODES during measurement period AND Age is greater than or equal to 18 years at measurement period equals Yes, include in Numerator Count. Numerator is represented by Letter a⁵ in the sample calculation listed at the end of this document. Letter a⁵ equals 1 patient in the sample calculation.
- b. If Most Recent (Result) Risk Category Assessment QDM data element, ADULT DEPRESSION SCREENING (result: Negative Depression Screening), starts during Occurrence A of Encounter Performed, QDM data element, DEPRESSION SCREENING ENCOUNTER CODES during measurement period AND Age is greater than or equal to 18 years at measurement period equals No, proceed to check Most Recent (Result) Risk Category Assessment.

17. Check Most Recent (Result) Risk Category Assessment:

- a. If Most Recent (Result) Risk Category Assessment QDM data element, ADULT DEPRESSION SCREENING (result: Positive Depression Screening), starts during Occurrence A of Encounter Performed, QDM data element, DEPRESSION SCREENING ENCOUNTER CODES during measurement period AND Age is greater than or equal to 18 years at measurement period equals Yes, proceed to check Intervention Performed.
- b. If Most Recent (Result) Risk Category Assessment QDM data element, ADULT DEPRESSION SCREENING (result: Positive Depression Screening), starts during Occurrence A of Encounter Performed, QDM data element, DEPRESSION SCREENING ENCOUNTER CODES during measurement period AND Age is

greater than or equal to 18 years at measurement period equals No, include in the No/Missing Data Submitted Count. Stop Processing.

18. Check Intervention Performed:

- a. If the Intervention Performed QDM data element, ADDITIONAL EVALUATION FOR DEPRESSION - ADULT less or equal to 1 day starts after or concurrent with start of Occurrence A of Encounter Performed, QDM data element, DEPRESSION SCREENING ENCOUNTER CODES during measurement period AND Age is greater than or equal to 18 years at measurement period equals Yes, include in Numerator Count. Numerator is represented by Letter a⁶ in the sample calculation listed at the end of this document. Letter a⁶ equals 1 patient in the sample calculation.
- b. If the Intervention Performed QDM data element, ADDITIONAL EVALUATION FOR DEPRESSION - ADULT less or equal to 1 day starts after or concurrent with start of Occurrence A of Encounter Performed, QDM data element, DEPRESSION SCREENING ENCOUNTER CODES during measurement period AND Age is greater than or equal to 18 years at measurement period equals No, proceed to check Intervention Order.

19. Check Intervention Order:

- a. If the Intervention Order QDM data element, REFERRAL FOR DEPRESSION ADULT less or equal to 1 day starts after or concurrent with start of Occurrence A of Encounter Performed, QDM data element, DEPRESSION SCREENING ENCOUNTER CODES during measurement period AND Age is greater than or equal to 18 years at measurement period equals Yes, include in Numerator Count. Numerator is represented by Letter a⁷ in the sample calculation listed at the end of this document. Letter a⁷ equals 1 patient in the sample calculation.
- b. If the Intervention Order QDM data element, REFERRAL FOR DEPRESSION ADULT less or equal to 1 day starts after or concurrent with start of Occurrence A of Encounter Performed, QDM data element, DEPRESSION SCREENING ENCOUNTER CODES during measurement period AND Age is greater than or equal to 18 years at measurement period equals No, proceed to check Medication Order.

20. Check Medication Order:

- a. If the Medication Order QDM data element, DEPRESSION MEDICATIONS - ADULT less or equal to 1 day starts after or concurrent with start of Occurrence A of Encounter Performed, QDM data element, DEPRESSION SCREENING ENCOUNTER CODES during measurement period AND Age is greater than or equal to 18 years at measurement period equals Yes, include in Numerator Count. Numerator is represented by Letter a⁷ in the sample calculation listed at the end of this document. Letter a⁷ equals 1 patient in the sample calculation.
- b. If the Medication Order QDM data element, DEPRESSION MEDICATIONS - ADULT less or equal to 1 day starts after or concurrent with start of Occurrence A of Encounter Performed, QDM data element, DEPRESSION SCREENING ENCOUNTER CODES during measurement period AND Age is greater than or

equal to 18 years at measurement period equals No, proceed to check Intervention Performed.

21. Check Intervention Performed:

- a. If the Intervention Performed QDM data element, FOLLOW-UP FOR DEPRESSION ADULT less or equal to 1 day starts after or concurrent with start of Occurrence A of Encounter Performed, QDM data element, DEPRESSION SCREENING ENCOUNTER CODES during measurement period AND Age is greater than or equal to 18 years at measurement period equals Yes, include in Numerator Count. Numerator is represented by Letter a⁸ in the sample calculation listed at the end of this document. Letter a⁸ equals 2 patients in the sample calculation.
- b. If the Intervention Performed QDM data element, FOLLOW-UP FOR DEPRESSION ADULT less or equal to 1 day starts after or concurrent with start of Occurrence A of Encounter Performed, QDM data element, DEPRESSION SCREENING ENCOUNTER CODES during measurement period AND Age is greater than or equal to 18 years at measurement period equals No, proceed to Procedure Performed.

22. Check Procedure Performed:

- a. If the Procedure Performed QDM data element, SUICIDE RISK ASSESSMENT, less than or equal to 1 day starts after or concurrent with start of Occurrence A of Encounter Performed, QDM data element, DEPRESSION SCREENING ENCOUNTER CODES during measurement period AND Age greater than or equal to 18 years at measurement period equals Yes, include in Numerator Count. Numerator is represented by Letter a⁸ in the sample calculation listed at the end of this document. Letter a⁸ equals 2 patients in the sample calculation.
- b. If the Procedure Performed QDM data element, SUICIDE RISK ASSESSMENT, less than or equal to 1 day starts after or concurrent with start of Occurrence A of Encounter Performed, QDM data element, DEPRESSION SCREENING ENCOUNTER CODES during measurement period AND Age greater than or equal to 18 years at measurement period equals No, proceed to check Risk Category Assessment Not Done.

23. Start Denominator Exceptions

24. Check Risk Category Assessment Not Done:

- a. If the Risk Category Assessment Not Done QDM data element, MEDICAL OR OTHER REASON NOT DONE, for Adolescent Depression Screening during measurement period equals Yes, include in Denominator Exceptions count. Denominator Exception is represented by Letter d¹ in the sample calculation listed at the end of this document. Letter d¹ equals 1 patient in the sample calculation.
- b. If the Risk Category Assessment Not Done QDM data element, MEDICAL OR OTHER REASON NOT DONE, for Adolescent Depression Screening during measurement period equals No, proceed to Risk Category Assessment Not Done.

25. Check Risk Category Assessment Not Done:

- a. If the Risk Category Assessment Not Done QDM data element, PATIENT REASON REFUSED, for Adolescent Depression Screening during measurement period equals Yes, include in Denominator Exceptions count. Denominator Exception is represented by Letter d¹ in the sample calculation listed at the end of this document. Letter d¹ equals 1 patient in the sample calculation.
- b. If the Risk Category Assessment Not Done QDM data element, PATIENT REASON REFUSED, for Adolescent Depression Screening during measurement period equals No, proceed to check Risk Category Assessment Not Done.

26. Check Risk Category Assessment Not Done:

- a. If the Risk Category Assessment Not Done QDM data element, MEDICAL OR OTHER REASON NOT DONE for Adult Depression Screening during measurement period equals Yes, include in Denominator Exceptions Count. Denominator Exception is represented by Letter d² in the sample calculation listed at the end of this document. Letter d² equals 1 patient in the sample calculation.
- b. If the Risk Category Assessment Not Done QDM data element, MEDICAL OR OTHER REASON NOT DONE for Adult Depression Screening during measurement period equals No, continue to check Risk Category Assessment Not Done.

27. Check Risk Category Assessment Not Done:

- a. If the Risk Category Assessment Not Done QDM data element, PATIENT REASON REFUSED, for Adult Depression Screening during measurement period equals Yes, include in Denominator Exceptions Count. Denominator Exception is represented by Letter d² in the sample calculation listed at the end of this document. Letter d² equals 1 patient in the sample calculation.
- b. If the Risk Category Assessment Not Done QDM data element, PATIENT REASON REFUSED, for Adult Depression Screening during measurement period equals No, include in the No/Missing Data Submitted Count. Stop Processing.

SAMPLE CALCULATION:

Performance Rate =

$$\frac{\text{Numerator } (a^1+a^2+a^3+a^4+a^5+a^6+a^7+a^8 = 11 \text{ patients})}{\text{Denominator } (b=20 \text{ patients}) - \text{Denominator Exclusions } (c^1+c^2+c^3+c^4 = 2 \text{ patients}) - \text{Denominator Exceptions } (d^1+d^2 = 2 \text{ patients})} = 68.75\%$$