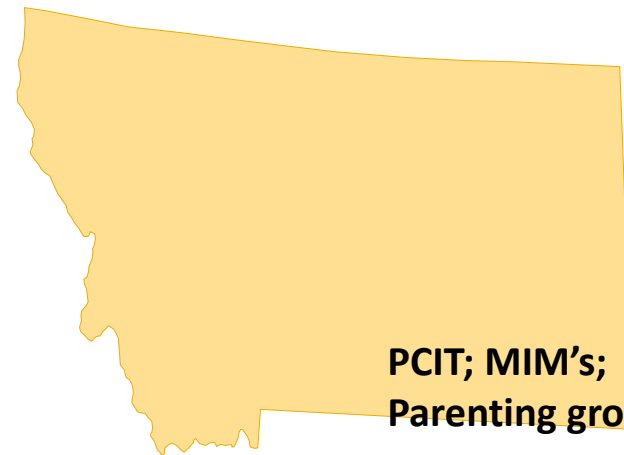


Who is Southwest Montana Community Health Center?

- 30 year old FQHC
- Level 3 PCMH-NCQA at Dillon and Butte clinic sites
- Serve Southwest Corner of Montana; Silver Bow, Madison, and Beaverhead counties
- Provide primary medical care, behavioral health, pharmacy, dental, and care management
- Serve approximately 14,000
- 60,000 visits annually
- Top diagnosis=depression
 - 2,117 patients with depression diagnosis
 - 2,517 patients with other mental health diagnosis (anxiety, PTSD, ADD, substance depend)



- All adult patients are screened annually with PHQ-2; if either questioned answered positive a full PHQ-9 is given.
- PCP treats appropriately and refers to behavioral health as indicated.
- Collaborative Care (IMPACT) model is used with stepped care approach if indicated.
- Targeting depressed adults.
- Interdisciplinary team includes: depression care managers, consulting psychiatrist, primary care provider, and behavioral health specialists
- Services include assessment, development of treatment plans and self-management goals, medication management, and BH therapy as needed
- Other behavioral health interventions with all patients as indicated.



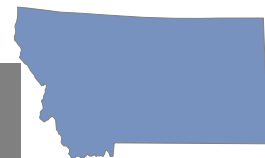
**PCIT; MIM's;
Parenting groups**

**Child
evaluation
center**

**Traditional
therapies**

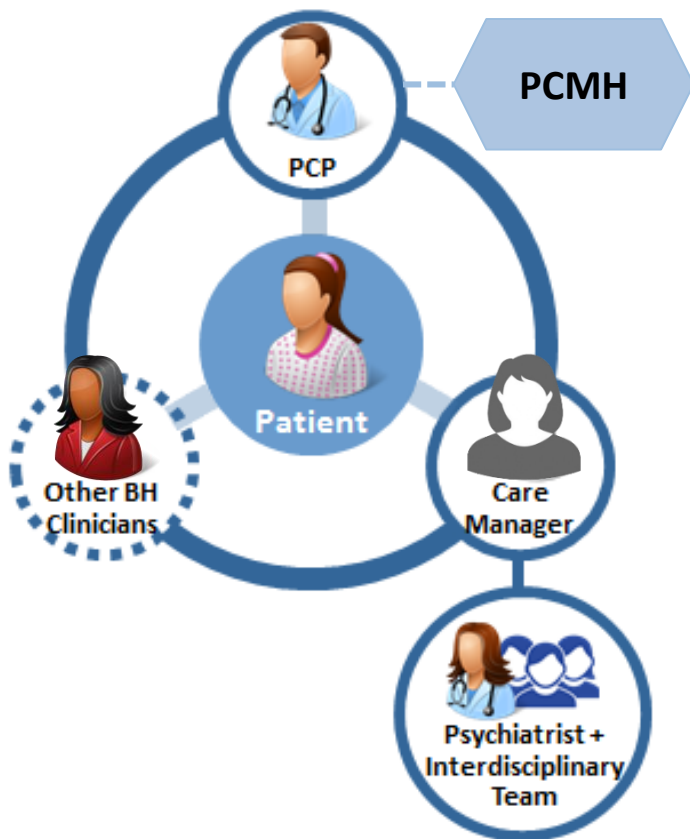
**Behavior
Modification**

IMPACT model



Collaborative Care Team Roles and Responsibilities

Collaborative Care Model



Role	Description
Patient	<ul style="list-style-type: none"> Member of identified target population, focusing on higher need populations Active participant in treatment
PCP	<ul style="list-style-type: none"> Patient identification and referral Works in consultation with care manager Oversees all aspect of patient's care May be embedded in a PCMh
Care Manager	<ul style="list-style-type: none"> Behavioral health professional embedded in PCP office Coordinates Collaborative Care Team Performs all care management tasks
Psychiatrist + Interdisciplinary Team	<ul style="list-style-type: none"> Supports and collaborates with PCP and care manager Consults on patients who are clinically challenging or need specialty behavioral health services
Other BH Clinicians	<ul style="list-style-type: none"> Embedded in PCP office or in community Supports PCP and care manager May see patients for in-person consultations

Collaborative Care Team Intervention – Overview

